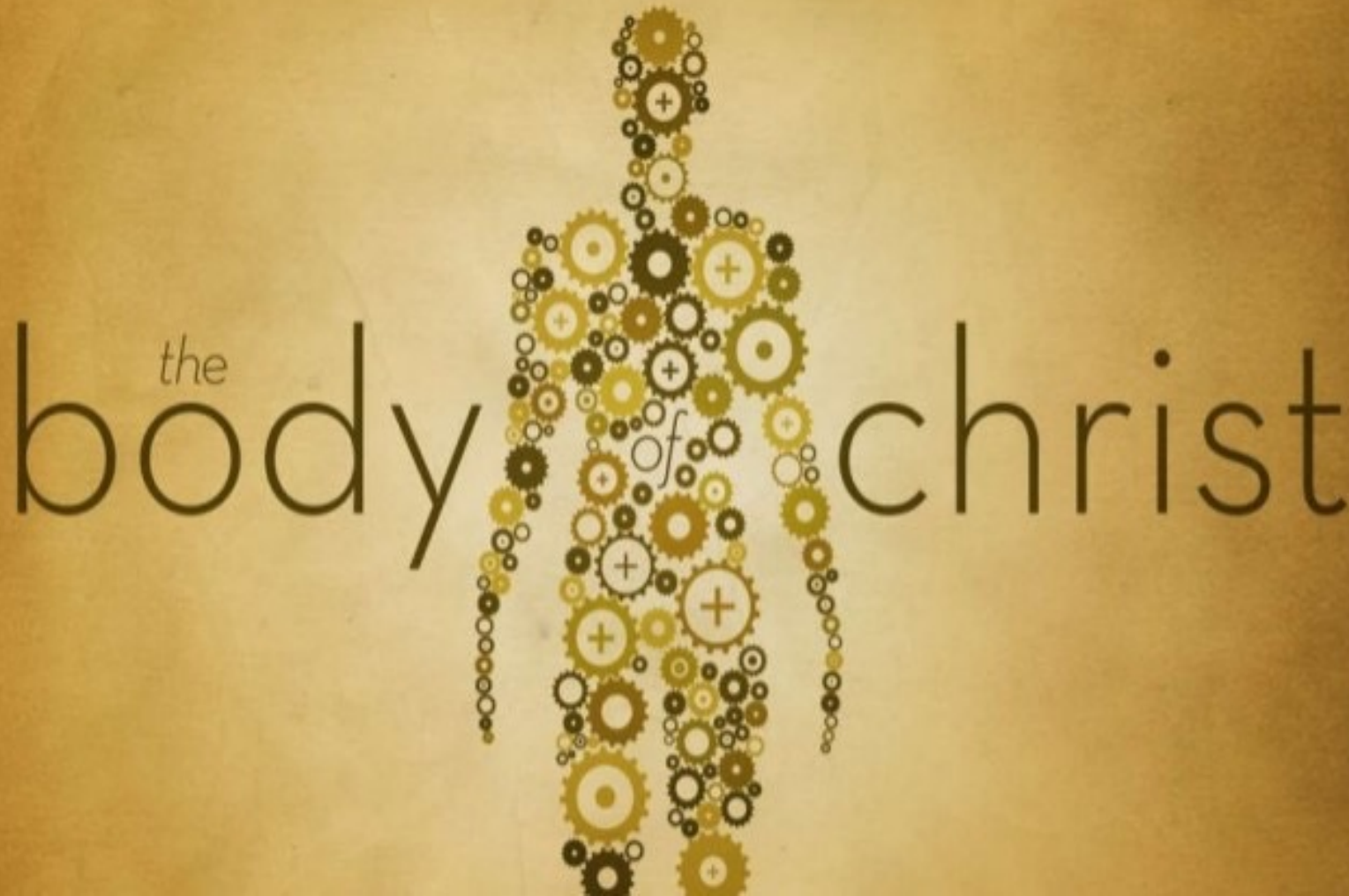




**BROKEN  
PIECES**

# THE BODY ANALOGY

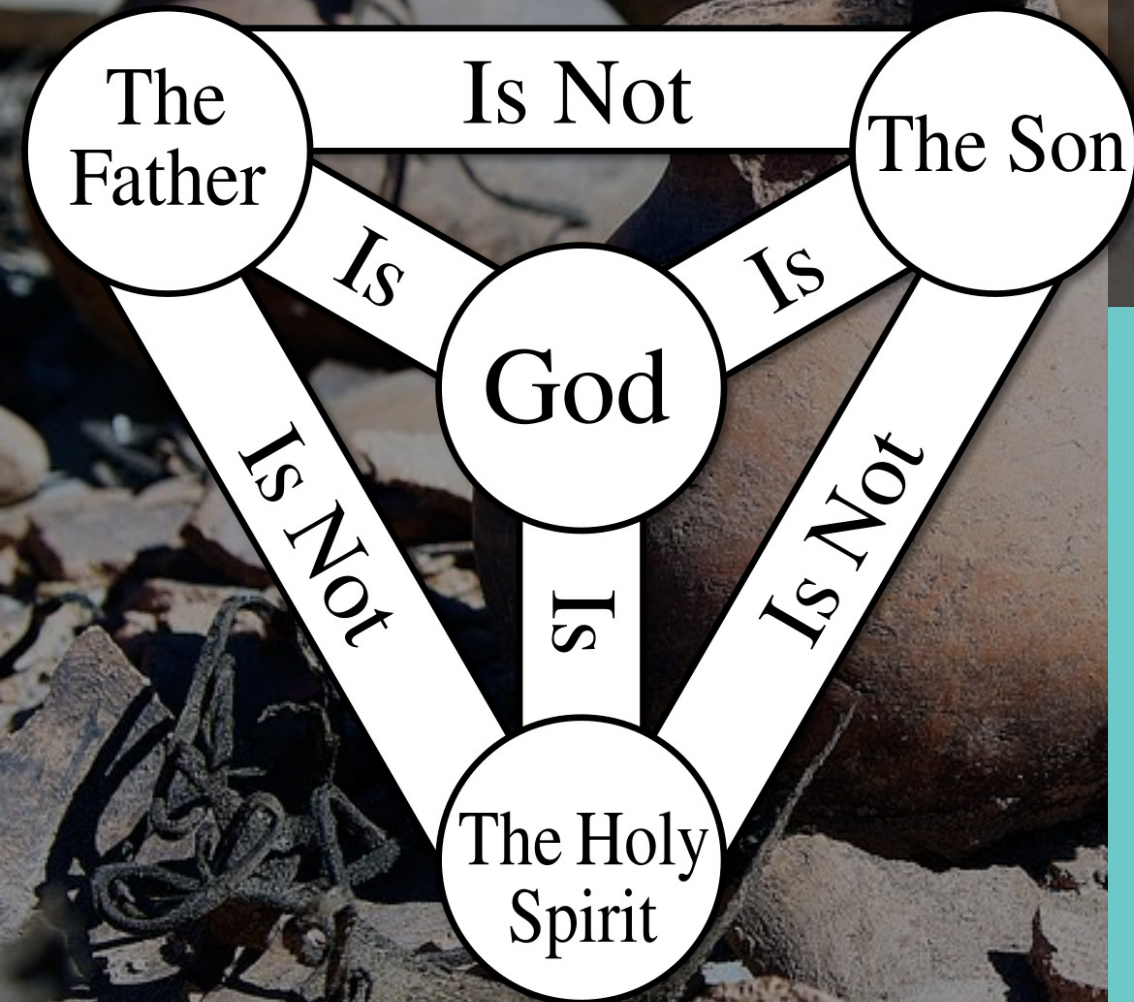
Romans 12:4-6



**ROMANS 12:4-5** **JUST AS**  
**OUR BODIES HAVE**  
**MANY PARTS** **+** **& EACH PART**  
**HAS A SPECIAL FUNCTION**  
**SO IT IS WITH CHRIST'S BODY**  
**WE ARE MANY PARTS OF**  
**ONE BODY** **& WE ALL BELONG TO EACH OTHER**

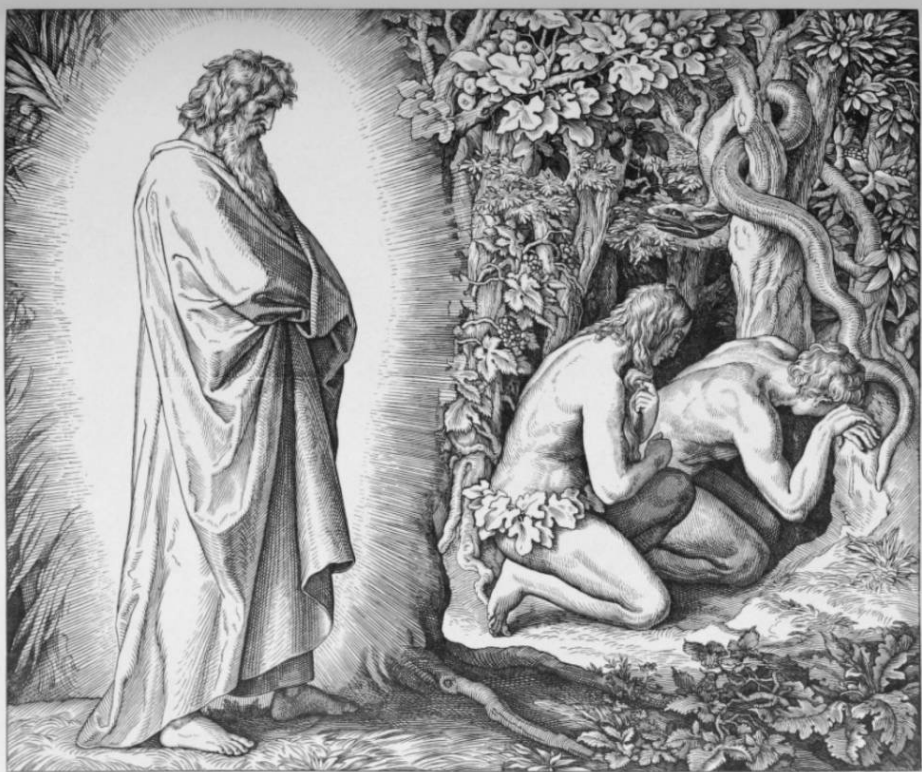
# GOD AS FAMILY

Genesis 1:26, Then God said, "Let us make human beings in our image, to be like us..."

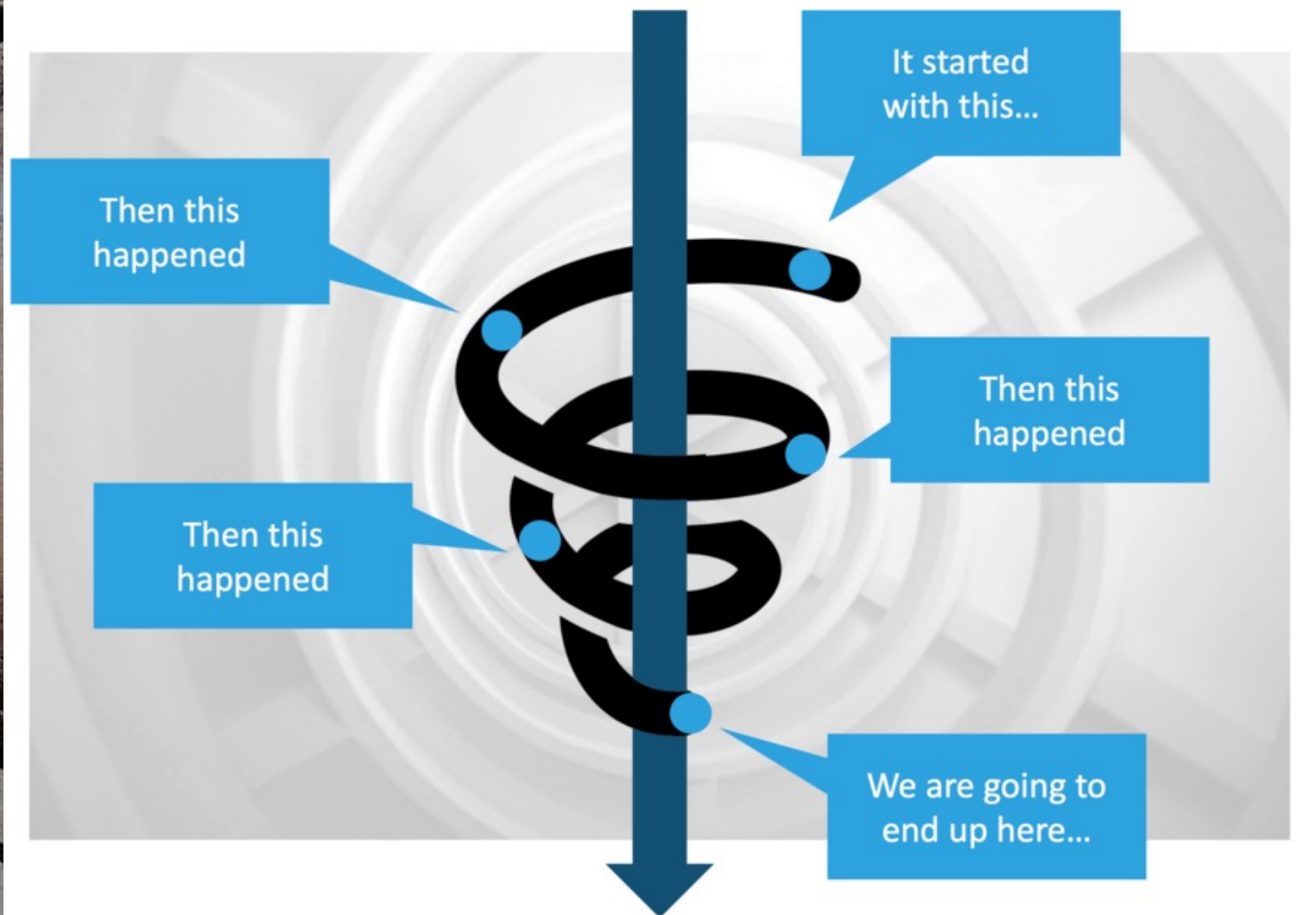


# BREAKING RELATIONSHIP

Genesis 3:6-13



“Sin is not breaking a rule, it is breaking a relationship.”



# CHOSEN PEOPLE?

Genesis 12:1-3, Judges 21:25

ALL PEOPLES ON  
EARTH WILL BE  
*blessed*

THROUGH YOU.

GENESIS 12:3

IN THOSE DAYS,  
THERE WAS NO *King*  
IN ISRAEL:  
EVERYONE  
DID WHAT EVER SEEMED  
*Right* TO HIM

JUDGES 21:25

# FOLLOWERS AS FAMILY

Galatians 3:26-29, Luke 8:19-21

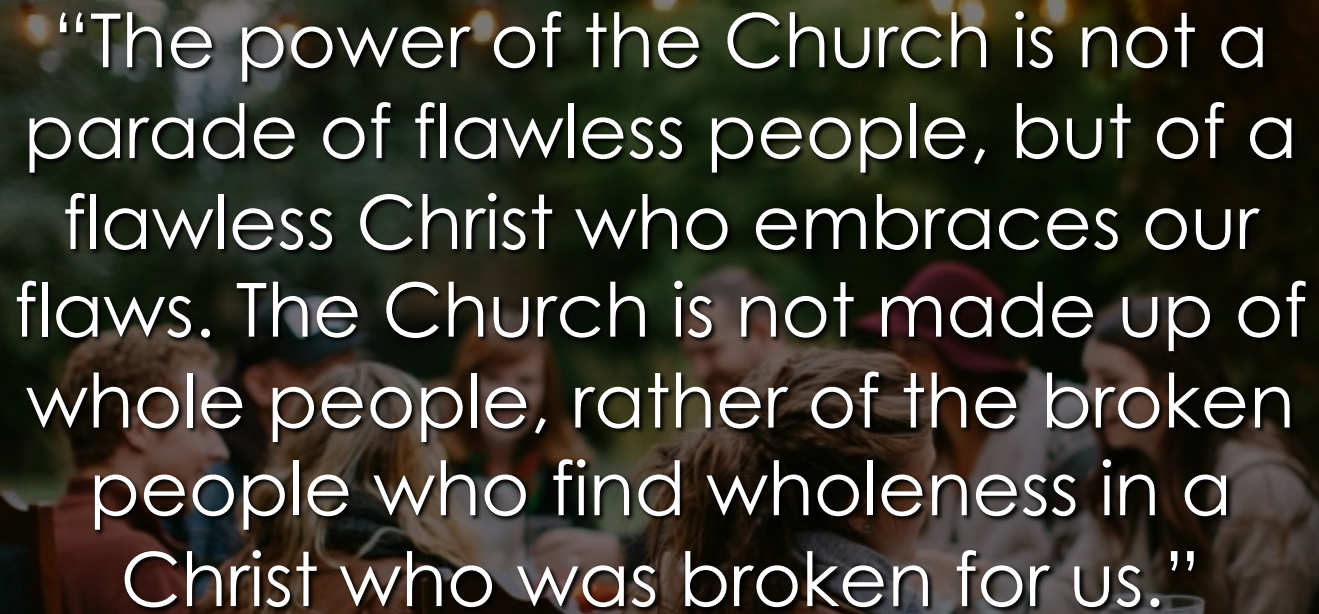
*You belong to Christ*

There is neither Jew nor Gentile, neither slave nor free, nor is there male and female, for you are all one in Christ Jesus. If **you belong to Christ**, then you are Abraham's seed, and heirs according to the promise.

Galatians 3:28- 29

“My mother and my brothers are all those who hear God's Word and obey Him.”

# BROKEN PEOPLE



“The power of the Church is not a parade of flawless people, but of a flawless Christ who embraces our flaws. The Church is not made up of whole people, rather of the broken people who find wholeness in a Christ who was broken for us.”

**Mike Yaconelli**

## ROADBLOCKS TO COMMUNITY:

**SAFETY** – We don't feel we have the emotional freedom or strength to be vulnerable with others.

**COMMUNICATION** – We grew up with broken forms of communication and have a hard time communicating well.

**CONFLICT** – Community inevitably brings conflict. Conflict often feels like abandonment or war.

**EXPECTATIONS** – We come with idealized expectations of how things will be. Unmet expectations result in disappointment.

# CHOICE & COMMITMENT

In entering community, we **choose**:

- To be intentional - Laying aside our fears & fully participating.
- To deal with our expectations - No one & no community is perfect.
- To work hard - Family is a place where people work together.
- To acknowledge Jesus' way is better - This was His idea, not ours.
- To declare that we need it - We were made for it - to be known & loved.

In entering community, we **commit** ourselves:

- To broken community with broken people. When you make people family, you hang in there and do it together despite what comes.
- To let go of autonomy - We need the body to help complete our picture of Jesus. The body needs us to complete its picture of Jesus.
- To understanding the reality of sin. People will hurt and disappoint us. But we will also hurt and disappoint others as well.